

# New build- Ysgol Plas Brondyffryn

## Well-being Impact Assessment Report


This report summarises the likely impact of the proposal on the social, economic, environmental and cultural well-being of Denbighshire, Wales and the world.

Assessment Number:	860
Brief description:	The impact of bringing Ysgol Plas Brondyffryn together on one site in a new purpose built building in Denbigh. The school is currently over 3 sites in the town.
Date Completed:	15/10/2021 15:46:11 Version: 1
Completed by:	Lisa Walchester
Responsible Service:	Education & Children Services
Localities affected by the proposal:	Denbigh,
Who will be affected by the proposal?	Staff and pupils at the school
Was this impact assessment completed as a group?	No

# IMPACT ASSESSMENT SUMMARY AND CONCLUSION

Before we look in detail at the contribution and impact of the proposal, it is important to consider how the proposal is applying the sustainable development principle. This means that we must act "in a manner which seeks to ensure that the needs of the present are met without compromising the ability of future generations to meet their own needs."

## Score for the sustainability of the approach


 ( 3 out of 4 stars ) Actual score : 28 / 36.

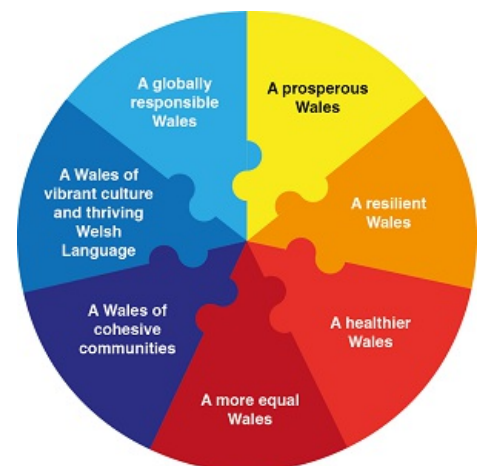
## Summary for each Sustainable Development principle

<b>Long term</b>	A new building for Ysgol Plan Brondyffryn will see its capacity increase by approx 100 places and will give the school an opportunity to design the school how they want to and ensure flexibility for the future in terms of the curriculum delivery and pupil numbers. It will bring all staff and pupils onto one site in a purpose build school fit for 21st Century learning.
<b>Prevention</b>	The increase in places at the school is needed- currently there is waiting list for the school and this September they Year 7 pupils were unable to move to the secondary due to lack of room and have and to remain in the primary site. As the proposal develops the impact of the build on the environment and on energy use moving forward will be considered.
<b>Integration</b>	We need to increase the capacity at the school significantly as demand increases for pupil places of this nature. If we do not local pupils will have to travel into other Local Authority areas to access these places or stay in unsuitable schools that cannot cater for their needs. By building a brand new build nearby to the current school- delivery on all current sites will not be disrupted.
<b>Collaboration</b>	We are already engaging with the school at a management level- with the senior staff and governors.
<b>Involvement</b>	As mentioned we are already engaging with the school and as we move forward parts, carers and pupils will be consulted in what they would like to see in the new school. As the project develops pre planning consultation will be undertaken with local residents.

## Summary of impact

### Well-being Goals

A prosperous Denbighshire	Positive
A resilient Denbighshire	Positive
A healthier Denbighshire	Positive
A more equal Denbighshire	Positive
A Denbighshire of cohesive communities	Positive
A Denbighshire of vibrant culture and thriving Welsh language	Neutral
A globally responsible Denbighshire	Positive



## Main conclusions

The project to bring together Ysgol Plas Brondyffryn on one site in a brand new building links with the Corporate priority of Young People and will enhance pupils learning. All the well being goals have

positive impacts except one which is neutral. As the business case for the proposal develop there will be a requirement for an on-going assessment process to ensure that potential impacts are appropriately addressed- i.e. if we need to undertake bat surveys for example. The build itself will help the local economy and will have a strong emphasise on community benefits. Once the school is completed the pupils and staff will have a modern purpose built facility that will match their needs and allow more pupils to access this type of school in the locality. The transition process for pupils will be managed in partnership with the school and staff and will be planned for in a detailed manner as will the decant of each site.

### **Evidence to support the Well-being Impact Assessment**

- We have consulted published research or guides that inform us about the likely impact of the proposal
- We have involved an expert / consulted a group who represent those who may affected by the proposal
- We have engaged with people who will be affected by the proposal

# THE LIKELY IMPACT ON DENBIGHSHIRE, WALES AND THE WORLD

## A prosperous Denbighshire

<b>Overall Impact</b>	Positive
<b>Justification for impact</b>	The new build will bring all pupils of the school together on one site with improved facilities and outdoor areas. The project will also increase the schools current capacity- the school is currently over its capacity and demand for places continues to increase.
<b>Further actions required</b>	Work closely with the appointed contractor on how we can reduce any carbon emissions during the build stage.

### Positive impacts identified:

<b>A low carbon society</b>	Reduce the carbon footprint of the school as 3 buildings will be vacated and the new building will employ new technologies.
<b>Quality communications, infrastructure and transport</b>	Utilise existing transport links. New build will have new ICT infrastructure which will improve the ICT delivery at the school.
<b>Economic development</b>	Building phase of the project will have Community benefits and use of local labour, apprentices etc.
<b>Quality skills for the long term</b>	The schools new facilities could provide pupils with opportunities to develop practical life and work skills- for example an operational cafe.
<b>Quality jobs for the long term</b>	The new provision will secure and increase the number of jobs at the school. Better facilities will also increase staff morale and improve staff retention.
<b>Childcare</b>	The new school will increase the amount of places available at this special school for pupils with Autistic Spectrum Condition.

### Negative impacts identified:

<b>A low carbon society</b>	The construction of the new build will create carbon emissions.
<b>Quality communications, infrastructure and transport</b>	N/A
<b>Economic development</b>	N/A
<b>Quality skills for the long term</b>	N/A
<b>Quality jobs for the long term</b>	N/A
<b>Childcare</b>	N/A

## A resilient Denbighshire

<b>Overall Impact</b>	Positive
<b>Justification for impact</b>	The site of the new building will be on an existing playing field and therefore we do not see a major disruption to the eco system. As described above any issues will be mitigated for in the relevant manner.

<b>Further actions required</b>	Waste management plan will be requirement of the procurement process.
---------------------------------	---

#### Positive impacts identified:

<b>Biodiversity and the natural environment</b>	The project will ensure all relevant biodiversity studies are undertaken and any mitigation actions followed.
<b>Biodiversity in the built environment</b>	If required new habitat areas would be developed within the school grounds.
<b>Reducing waste, reusing and recycling</b>	Appointed contractor will have a waste management plan.
<b>Reduced energy/fuel consumption</b>	The new building will be designed to minimise energy costs. Consideration will be made on how the transportation of materials will be delivered to the site, sourcing locally where possible to reduce emissions.
<b>People's awareness of the environment and biodiversity</b>	Scope during the construction phase to involve the local community and the school.
<b>Flood risk management</b>	The issue of flooding will be examined during the design and planning stages.

#### Negative impacts identified:

<b>Biodiversity and the natural environment</b>	N/A
<b>Biodiversity in the built environment</b>	N/A
<b>Reducing waste, reusing and recycling</b>	N/A
<b>Reduced energy/fuel consumption</b>	N/A
<b>People's awareness of the environment and biodiversity</b>	N/A
<b>Flood risk management</b>	N/A

### A healthier Denbighshire

<b>Overall Impact</b>	Positive
<b>Justification for impact</b>	Improved facilities for the school will assist in pupil and staff overall emotional and mental wellbeing. The building will be fit for purpose and will be flexible enough to adapt when it needs to.
<b>Further actions required</b>	Ensure all residents are informed and kept up to date in regards to build progress by the contractor.

#### Positive impacts identified:

<b>A social and physical environment that encourage and support health and well-being</b>	Improved facilities and learning environment will improve staff, pupil and community morale.
<b>Access to good quality, healthy food</b>	The school will have a dedicated dining area for all pupils.

<b>People's emotional and mental well-being</b>	Improved external areas for play and the new build could also house a hydro therapy pool to be used by pupils. All pupils on one site- no transition when pupils move from the primary to the secondary section of the school and any siblings at the school would be at the same site at all times.
<b>Access to healthcare</b>	N/A
<b>Participation in leisure opportunities</b>	Improved access to outdoor areas as well as improved external areas overall with more space and play equipment.

#### **Negative impacts identified:**

<b>A social and physical environment that encourage and support health and well-being</b>	N/A
<b>Access to good quality, healthy food</b>	N/A
<b>People's emotional and mental well-being</b>	Disruption for residents living near the site during the construction of the new build.
<b>Access to healthcare</b>	N/A
<b>Participation in leisure opportunities</b>	N/A

### **A more equal Denbighshire**

<b>Overall Impact</b>	Positive
<b>Justification for impact</b>	The project will provide facilities that will support better teaching and an improved learning environment.
<b>Further actions required</b>	None

#### **Positive impacts identified:**

<b>Improving the well-being of people with protected characteristics. The nine protected characteristics are: age; disability; gender reassignment; marriage or civil partnership; pregnancy and maternity; race; religion or belief; sex; and sexual orientation</b>	Improve access to education for those pupils with Autism Spectrum Condition.
<b>People who suffer discrimination or disadvantage</b>	Improve access to education for those pupils with Autism Spectrum Condition.

<b>People affected by socio-economic disadvantage and unequal outcomes</b>	N/A
<b>Areas affected by socio-economic disadvantage</b>	Pupils with ASC will have first class facilities to develop life and work skills.

### Negative impacts identified:

<b>Improving the well-being of people with protected characteristics. The nine protected characteristics are: age; disability; gender reassignment; marriage or civil partnership; pregnancy and maternity; race; religion or belief; sex; and sexual orientation</b>	N/A
<b>People who suffer discrimination or disadvantage</b>	N/A
<b>People affected by socio-economic disadvantage and unequal outcomes</b>	N/A
<b>Areas affected by socio-economic disadvantage</b>	N/A

## A Denbighshire of cohesive communities

<b>Overall Impact</b>	Positive
<b>Justification for impact</b>	The proposal would bring the school community of Ysgol Plas Brondyffryn together in a brand new purpose built facility. The school already link in with Ysgol Tir Morfa and these links will be strengthened as facilities could also be accessed by these pupils. Facilities could also be offered out to community use where appropriate i.e. if there was a hydro therapy pool this could be available at weekends or evening to the health authority.
<b>Further actions required</b>	Keep residents informed of when any particular noisy works are to take place.

### Positive impacts identified:

<b>Safe communities and individuals</b>	All pupils will be educated at one site rather than 3 separate sites which is how the school currently operates. Safeguarding will be considered during the design stage to ensure clear demarcation between the public and private zones both within the new building itself and the overall site. The new building will be designed to ensure pupil and staff safety.
---	---

<b>Community participation and resilience</b>	Pre-planning consultation events will be held with the community so they can view the plans and ask any questions they may have. The facilities could include a cafe and more vocational opportunities that pupils from our other special school in Denbighshire Ysgol Tir Morfa can also utilise especially in the post 16 provision.
<b>The attractiveness of the area</b>	The design of the new build will look to enhance the area.
<b>Connected communities</b>	The new build will increase the capacity of the school which will ensure Denbighshire pupils will not need to go out of County to access this type of provision.
<b>Rural resilience</b>	N/A

#### **Negative impacts identified:**

<b>Safe communities and individuals</b>	N/A
<b>Community participation and resilience</b>	N/A
<b>The attractiveness of the area</b>	Noise and disruption through the build process.
<b>Connected communities</b>	N/A
<b>Rural resilience</b>	N/A

### **A Denbighshire of vibrant culture and thriving Welsh language**

<b>Overall Impact</b>	Neutral
<b>Justification for impact</b>	The majority of the children that attend are from English speaking homes and Welsh is taught as a second language, however education can be provided through the medium of Welsh if requested by the family. It will be important for the contractor to ensure all communications to residents are bilingual.
<b>Further actions required</b>	None

#### **Positive impacts identified:**

<b>People using Welsh</b>	Insisting the contractors use bilingual signs and newsletters when communicating to the public.
<b>Promoting the Welsh language</b>	N/A
<b>Culture and heritage</b>	The new facility could be used for community events and social activities linked to the Welsh culture.

#### **Negative impacts identified:**

<b>People using Welsh</b>	N/A
<b>Promoting the Welsh language</b>	N/A
<b>Culture and heritage</b>	N/A

### **A globally responsible Denbighshire**

<b>Overall Impact</b>	Positive
-----------------------	----------



<b>Justification for impact</b>	Overall the impact will be positive through encouraging the use of local supply chains.
<b>Further actions required</b>	As the proposal develops further the impact of the works on carbon emissions will be more apparent and it possible mitigation actions will be put in place. We will work closely with the contractor in designing an energy efficient building as we can within the budget.

**Positive impacts identified:**

<b>Local, national, international supply chains</b>	The procurement option for the project will allow access to local contractors. Community Benefits will be evaluated at tender stage and monitored throughout the project.
<b>Human rights</b>	Ensure the contractor is a 'Considerate Contractor' .
<b>Broader service provision in the local area or the region</b>	N/A
<b>Reducing climate change</b>	The building will be designed so it is as energy efficient as it possibly can be.

**Negative impacts identified:**

<b>Local, national, international supply chains</b>	N/A
<b>Human rights</b>	N/A
<b>Broader service provision in the local area or the region</b>	N/A
<b>Reducing climate change</b>	The constructions of a new build will create carbon emissions.