

## Appendix 1

# Outsourcing of Hafan Deg

## Wellbeing Impact Assessment Report

This report summarises the likely impact of a proposal on the social, economic, environmental and cultural well-being of Denbighshire, Wales and the world.

Assessment Number:	291
Brief description:	Outsourcing the building and day care service at Hafan Deg to an independent Provider on a 25 year lease. The Provider will provide an innovative day service to people of Rhyl and surrounding area.
Date Completed:	15/09/2017 10:43:26 Version: 2
Completed by:	Emily Jones-Davies
Responsible Service:	Community Support Services
Localities affected by the proposal:	Rhyl,

# IMPACT ASSESSMENT SUMMARY AND CONCLUSION

Before we look in detail at the contribution and impact of the proposal, it is important to consider how the proposal is applying the sustainable development principle. This means that we must act "in a manner which seeks to ensure that the needs of the present are met without compromising the ability of future generations to meet their own needs."

## Score for the sustainability of the approach

Could some small changes in your thinking produce a better result?

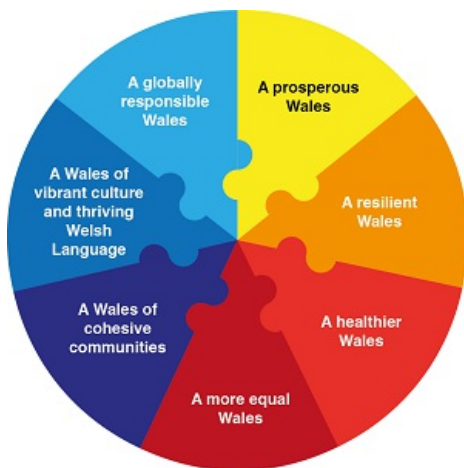


(3 out of 4 stars)

Actual score : 22 / 24.

## Summary of impact

Wellbeing Goals



A prosperous Denbighshire	Positive
A resilient Denbighshire	Neutral
A healthier Denbighshire	Positive
A more equal Denbighshire	Positive
A Denbighshire of cohesive communities	Positive
A Denbighshire of vibrant culture and thriving Welsh language	Positive
A globally responsible Denbighshire	Neutral

## Main conclusions

Overall, the service is going to have a positive effect on Denbighshire. The service is tailored towards providing a healthier Denbighshire, whilst providing on-going services to the local community. No further impact assessment is required.

# THE LIKELY IMPACT ON DENBIGHSHIRE, WALES AND THE WORLD

## A prosperous Denbighshire

Overall Impact	Positive
Justification for impact	This service is going to create access to the community for those people who would have otherwise struggled. It will become a community hub, a place for people to go for support, social interaction and stimulation. The increase of people into the area on a regular basis will benefit Denbighshire.

### Positive consequences identified:

This service will enhance the Rhyl and surrounding areas by bringing people together, creating roles and responsibilities for people attending, whilst creating a hub for the local area to access different activities.

Opportunity to increase Jobs within the centre as the service is developed

A major part of this service is to support people to maintain daily living skills and support them to find new skills and abilities.

The project will look at how transport for the citizens can be provided in different ways, making people more independent and sourcing out their own methods of transport and mobility.

### Unintended negative consequences identified:

Minimal service being transferred over means potential reduction in hours or loss of jobs the timescales to do this will be over a long period of time.

1 bus will be lost in the tender process

### Mitigating actions:

Monitor the service closely to see whether the upskilling of people can be carried out any quicker. Offer the provider the choice of taking a bus as part of the tender.

## A resilient Denbighshire

Overall Impact	Neutral
Justification for impact	The service is currently underused. The idea of the tender is to increase people coming to the centre independently and with support. Therefore, there will be an increase in traffic to and from the service because the transport previously supplied is no longer viable. Waste and recycling will increase, however, there are already suitable arrangements in place to collect this, and as it is currently underused there should be minimal impact

### Positive consequences identified:

This will have no impact

The building will remain the same.

This will reduce. currently the centre runs two buses for transport. This has been reduced to 1 in anticipation of the tender, and the option for the Provider has been given to find their own methods of transportation.

Hafan Deg acts as an emergency back up centre for such an occasion.

**Unintended negative consequences identified:**

Possible increase in traffic to and from the centre during drop off and pick up times at the centre as the centre useage increases there may be an increase in recycling / waste, but this will be minimal.

**Mitigating actions:**

Close monitoring of the service.

**A healthier Denbighshire**

Overall Impact	Positive
Justification for impact	The service is focused on preventing isolation and encouraging participation to increase wellbeing. Therefore there are no negative impacts.

**Positive consequences identified:**

The project main objective is to provide a social environment to prevent isolation and promote well-being.

Fitted kitchen will be used to full potential for the community. Currently under used.

The day service aims to increase leisure opportunities for those attending the service. These will depend on peoples wants and interests and what support is available for participation

This is a key element of the service. The main goal of the service is to reduce isolation and increase people's well being to support them to remain within their community for longer.

The service will offer signposting to other organisations including health.

**Unintended negative consequences identified:**

**Mitigating actions:**

Monitor closely

**A more equal Denbighshire**

Overall Impact	Positive
Justification for impact	The service objective is to provide support to people over the age of 65 or with a disability. The service will offer a signposting service and support to help people manage their financial situation, deal with poverty issues and benefit entitlement.

**Positive consequences identified:**

The service is aimed for people over the age of 65 or those with a disability. The centre will become a Hub for people to drop in and use the services as they wish. It will encompass people from all backgrounds and diversities.

Those people using the centre will be assessed through the new care act to ensure that they have enough money, benefits etc. Also the centre will continuously work with people to support them to

mange this ongoing.

**Unintended negative consequences identified:**

**Mitigating actions:**

Monitor that the signposting service is working correctly.

**A Denbighshire of cohesive communities**

Overall Impact	Positive
Justification for impact	

**Positive consequences identified:**

Safeguarding of vulnerable adults is key and will be monitored through the contract. The service objectives are to increase volunteering within the community, increase involvement with the local community and support people to engage more within their local community. The location is idea for this type of service. The building forms part of a social housing site close to the main town of Rhyl. It has good road links and bus links for easy access.

**Unintended negative consequences identified:**

**Mitigating actions:**

Monitor the contract and ensure training of staff is current.

**A Denbighshire of vibrant culture and thriving Welsh language**

Overall Impact	Positive
Justification for impact	Welsh Language is essential in this service for those people to receive services in the language they wish. It will be a clause within the contract.

**Positive consequences identified:**

The service will be offered bilingually when ever possible. Bilingual signage will be used at the centre, and welsh Language courses will be available to staff through Denbighshire. Links with the community, eisteddfod, etc will be encouraged as part of the service within the spec.

**Unintended negative consequences identified:**

**Mitigating actions:**

Monitor the contract.

**A globally responsible Denbighshire**

Overall Impact	Neutral
Justification for impact	TUPE process is law. Denbighshire have to abide by it, therefore there is no positive or negative impact.

**Positive consequences identified:**

The staff will undergo TUPE transfer in accordance with the guidance. All details will be met. The contract states that all policies and procedures relating to human rights, employment, H&S must be current and reviewed at least annually.

**Unintended negative consequences identified:**

**Mitigating actions:**

Work with HR and pensions to make the move go as smoothly as possible.