

Appendix 1

Wildflower Meadow Project

Well-being Impact Assessment Report


This report summarises the likely impact of the proposal on the social, economic, environmental and cultural well-being of Denbighshire, Wales and the world.

Assessment Number:	966
Brief description:	The creation of Wildflower Meadow Sites across the County. The sites are left uncut between March and August each year, except a small border mown around each site cut on a fortnightly schedule and a litter pick undertaken during this time too. This management regime allows the flowers to set seed, and ensures that the meadow provides the greatest benefit to wildlife. At the end of the season, the whole site is then cut with specialist mowing equipment, and the cuttings are removed. This helps to lower the richness of the soil, and create the low-nutrient ground that our native wildflowers and grasses need to thrive. If necessary, we plant native wildflowers grown from local seeds or sow seeds collected from our other sites, to increase the species richness. This is primarily within sites managed by Street Scene but hopes to be extended to more areas the Council owns or manages e.g. more public realm sites, community housing sites, care home sites etc.
Date Completed:	Version: 0
Completed by:	
Responsible Service:	Planning & Public Protection
Localities affected by the proposal:	Whole County,
Who will be affected by the proposal?	Internally - Street Scene - Site grounds maintenance providers (various) - Biodiversity Team - Communication and Web team - Councillors Externally - Wildlife - Species richness - Residents - Visitors - Regulators
Was this impact assessment completed as a group?	No

IMPACT ASSESSMENT SUMMARY AND CONCLUSION

Before we look in detail at the contribution and impact of the proposal, it is important to consider how the proposal is applying the sustainable development principle. This means that we must act "in a manner which seeks to ensure that the needs of the present are met without compromising the ability of future generations to meet their own needs."

Score for the sustainability of the approach


 (3 out of 4 stars) Actual score : 30 / 36.

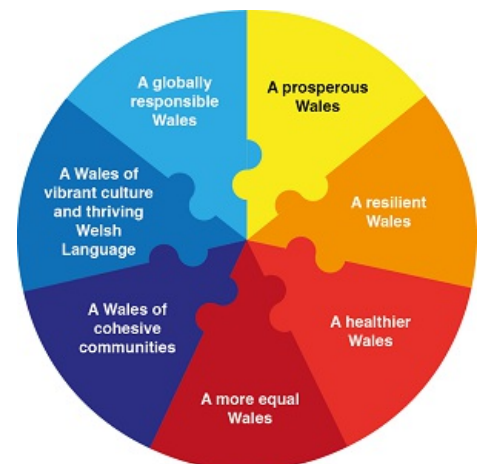
Summary for each Sustainable Development principle

Long term	This project has the long term at its heart, building resilience of natural assets and promoting natures recovery. How to secure the legacy of the proposal in particular the sustainable management of these sites has been a consideration from the get go and funding from Welsh Government secured to procure pieces of equipment to help ensure the manageability of these sites.
Prevention	The project is about encouraging less human intervention in a number of sites across the County, thus reducing reliance on public service at these sites and giving space and time to nature to recover and prevent the further decline in species.
Integration	The aims of the Wildflower Meadow Project have been stated objectives of the council for many years now. The project was included in our Biodiversity Duty Delivery Plan 2016-2019, forms an important part of our strategy to achieve the biodiversity targets set out in our Corporate Plan 2017-22, and our ambition to become an Ecologically Positive Council by 2030 in Climate and Ecological Change Strategy. This project also contributes to the Council's Bee Friendly status.
Collaboration	The Wildflower Meadow Project is a joint project between Highways & Environmental Service and Planning and Public Protection & Countryside Service and project managed by the Climate Change team. Biodiversity team and Street Scene teams have worked together on the project and project endorsed by external bodies such as Plantlife and Bionet.
Involvement	We continue to evolve the project in light of resident and councillor feedback as we build on the number of sites year on year.

Summary of impact

Well-being Goals

A prosperous Denbighshire	Neutral
A resilient Denbighshire	Positive
A healthier Denbighshire	Neutral
A more equal Denbighshire	Neutral
A Denbighshire of cohesive communities	Positive
A Denbighshire of vibrant culture and thriving Welsh language	Positive
A globally responsible Denbighshire	Positive



Main conclusions

As a local authority we have a statutory duty to function sustainably and lead by example when it comes to protecting and enhancing our natural environment. To meet the challenge of reversing the decline in biodiversity it is essential that we act now and ensure as a local authority we meet the needs of the present without compromising the ability of future generations to meet their own needs.

This project outlines how, as an organisation, it can contribute to address its biodiversity duty under the Environment (Wales) Act 2016 and consequently help achieve its Well-being and Nature Recovery Plan objectives over the period 2016-19. In addition to delivering on the Council's Climate Change and Ecological Emergency Declaration and achievement of the Ecologically Positive Council by 2030 goal within our Climate and Ecological Change Strategy.

The Wellbeing Impact Assessment has shown that the adoption of this document will align the council with the Wellbeing of Future Generations Act. Although largely an internal document, the benefits will be felt by residents throughout the county.

Evidence to support the Well-being Impact Assessment

- We have consulted published research or guides that inform us about the likely impact of the proposal
- We have involved an expert / consulted a group who represent those who may affected by the proposal
- We have engaged with people who will be affected by the proposal

THE LIKELY IMPACT ON DENBIGHSHIRE, WALES AND THE WORLD

A prosperous Denbighshire

Overall Impact	Neutral
Justification for impact	Greener and more attractive environments in both towns and villages. Increased tourism potential. Especially as more rare species become present again within Denbighshire which may not have been recorded elsewhere in UK for decades.
Further actions required	n/a

Positive impacts identified:

A low carbon society	n/a
Quality communications, infrastructure and transport	n/a
Economic development	Greener and more attractive environments in both towns and villages. Increased tourism potential. Especially as more rare species become present again within Denbighshire which may not have been recorded elsewhere in UK for decades.
Quality skills for the long term	Increased opportunities to develop skills in the outdoor environment sector, with opportunities for staff throughout the authority to volunteer.
Quality jobs for the long term	A greener, more attractive county offers a more attractive place to work.
Childcare	n/a

Negative impacts identified:

A low carbon society	n/a
Quality communications, infrastructure and transport	n/a
Economic development	n/a
Quality skills for the long term	n/a
Quality jobs for the long term	n/a
Childcare	n/a

A resilient Denbighshire

Overall Impact	Positive
Justification for impact	This project is all about increasing the resilience of our ecosystems and in supporting natures recovery.
Further actions required	n/a

Positive impacts identified:

Biodiversity and the natural environment	The focus of this project is to protect and enhance biodiversity and the natural environment.
Biodiversity in the built environment	n/a
Reducing waste, reusing and recycling	Removal of arisings from sites for use as feed for animals and creation of composting material
Reduced energy/fuel consumption	n/a
People's awareness of the environment and biodiversity	The project will engage and support participation and understanding to embed biodiversity in peoples thinking.
Flood risk management	Restoring degraded habitats within the water catchment areas will help to slow the flow of water and reduce the likelihood of flooding. Removing arisings from sites will reduce likelihood these make there way to ditches, gullies and rivers which would prevent reduction of capacity in water routes.

Negative impacts identified:

Biodiversity and the natural environment	n/a
Biodiversity in the built environment	n/a
Reducing waste, reusing and recycling	n/a
Reduced energy/fuel consumption	n/a
People's awareness of the environment and biodiversity	n/a
Flood risk management	n/a

A healthier Denbighshire

Overall Impact	
Justification for impact	A more attractive, greener environment encourages people to spend time outdoors, and has known benefits to mental and physical health.
Further actions required	n/a

Positive impacts identified:

A social and physical environment that encourage and support health and well-being	A more attractive, greener environment encourages people to spend time outdoors, and has known benefits to mental and physical health.
Access to good quality, healthy food	n/a

People's emotional and mental well-being	A more attractive, greener environment encourages people to spend time outdoors, and has known benefits to mental and physical health.
Access to healthcare	n/a
Participation in leisure opportunities	n/a

Negative impacts identified:

A social and physical environment that encourage and support health and well-being	n/a
Access to good quality, healthy food	n/a
People's emotional and mental well-being	n/a
Access to healthcare	n/a
Participation in leisure opportunities	n/a

A more equal Denbighshire

Overall Impact	Neutral
Justification for impact	The project isn't focused on creating a more equal Denbighshire but is being delivered in a way that doesn't prevent equality.
Further actions required	n/a

Positive impacts identified:

Improving the well-being of people with protected characteristics. The nine protected characteristics are: age; disability; gender reassignment; marriage or civil partnership; pregnancy and maternity; race; religion or belief; sex; and sexual orientation	Any planting days or communication material will be planned and created to enable access for all.
People who suffer discrimination or disadvantage	n/a
People affected by socio-economic disadvantage and unequal outcomes	n/a

Areas affected by socio-economic disadvantage	Some areas for wildflower meadows will be in areas affected by socio-economic disadvantage. The benefit of nature's recovery will be felt in these areas.
------------------------------------------------------	-----------------------------------------------------------------------------------------------------------------------------------------------------------

Negative impacts identified:

Improving the well-being of people with protected characteristics. The nine protected characteristics are: age; disability; gender reassignment; marriage or civil partnership; pregnancy and maternity; race; religion or belief; sex; and sexual orientation	n/a
People who suffer discrimination or disadvantage	n/a
People affected by socio-economic disadvantage and unequal outcomes	n/a
Areas affected by socio-economic disadvantage	n/a

A Denbighshire of cohesive communities

Overall Impact	Neutral
Justification for impact	It is important to remember that we are not doing this for aesthetic reasons; we are doing it for the environmental benefits. However, our wildflower meadows often do still look beautiful.
Further actions required	Increasing and continual education and awareness campaigns on what wildflower meadows look like and how they develop over time.

Positive impacts identified:

Safe communities and individuals	n/a
Community participation and resilience	Arrangement of planting days and/or wildflower identification training, as appropriate, with local residents.
The attractiveness of the area	It is important to remember that we are not doing this for aesthetic reasons; we are doing it for the environmental benefits. However, our wildflower meadows often do still look beautiful
Connected communities	n/a
Rural resilience	n/a

Negative impacts identified:

Safe communities and individuals	n/a
Community participation and resilience	n/a
The attractiveness of the area	Wildflower meadows sites are not pictorial meadows. Pictorial meadows are made up of mixes of plants and are often referred to as 'wildflower meadows'. Usually pictorial meadows include many non-native species, and no grasses. Pictorial meadows provide less benefits to biodiversity and need regular, costly maintenance.
Connected communities	n/a
Rural resilience	n/a

A Denbighshire of vibrant culture and thriving Welsh language

Overall Impact	Positive
Justification for impact	This project has a positive contribution to make to securing a vibrant culture in Denbighshire based on survival of species of Welsh and UK importance. That heritage of nature's survival and encouragement is something that can be built on and marketed to celebrate locally and nationally.
Further actions required	n/a

Positive impacts identified:

People using Welsh	n/a
Promoting the Welsh language	All signage and promotion material bilingual with Welsh featuring first
Culture and heritage	After just one year of changing management at these sites, we have recorded common spotted orchids in Stryd y Brython, Ruthin, as well as Hound's-Tongue and Toothed Medick at two of our Prestatyn sites. Toothed Medick has never had a confirmed record in Wales and Hound's-Tongue is a near-threatened plant on the GB red list, and has only been recorded 18 times in Denbighshire in the last 116 years. We also have a suspected record of sea-clover at Plas Lorna, which is a nationally scarce plant recorded just once before in North Wales, and recorded several hornet hoverflies at another site in Rhuddlan.

Negative impacts identified:

People using Welsh	n/a
Promoting the Welsh language	n/a
Culture and heritage	n/a

A globally responsible Denbighshire

Overall Impact	Positive
Justification for impact	Project has a positive contribution to make because of its explicit intervention in reducing nature's decline.
Further actions required	Use local stockist or suppliers for specialist equipment who source equipment from further afield.

Positive impacts identified:

Local, national, international supply chains	Local plants and seeds of local provenance will be used as supplementary planting/support to the development of the sites.
Human rights	n/a
Broader service provision in the local area or the region	n/a
Reducing climate change	The project is specifically about slowing and reversing nature's decline

Negative impacts identified:

Local, national, international supply chains	Specialist equipment required tends to not be manufactured in Wales/UK, rather on mainland Europe
Human rights	n/a
Broader service provision in the local area or the region	n/a
Reducing climate change	n/a