

# Regional Memory Assessment and Support Service.

## Well-being Impact Assessment Report


This report summarises the likely impact of the proposal on the social, economic, environmental and cultural well-being of Denbighshire, Wales and the world.

Assessment Number:	969
Brief description:	The commissioning of integrated advice and support services across the North Wales region for people requiring pre-assessment and post-assessment support for those with memory issues or concerns and following diagnosis of dementia..
Date Completed:	28/10/2021 10:49:16 Version: 6
Completed by:	Siobhan Gothorp
Responsible Service:	Community Support Services
Localities affected by the proposal:	Whole County,
Who will be affected by the proposal?	Those that have memory concerns, issues and those diagnosed with dementia and their families / carers.
Was this impact assessment completed as a group?	Yes

# IMPACT ASSESSMENT SUMMARY AND CONCLUSION

Before we look in detail at the contribution and impact of the proposal, it is important to consider how the proposal is applying the sustainable development principle. This means that we must act "in a manner which seeks to ensure that the needs of the present are met without compromising the ability of future generations to meet their own needs."

## Score for the sustainability of the approach

 ( 3 out of 4 stars ) Actual score : 31 / 36.

## Summary for each Sustainable Development principle

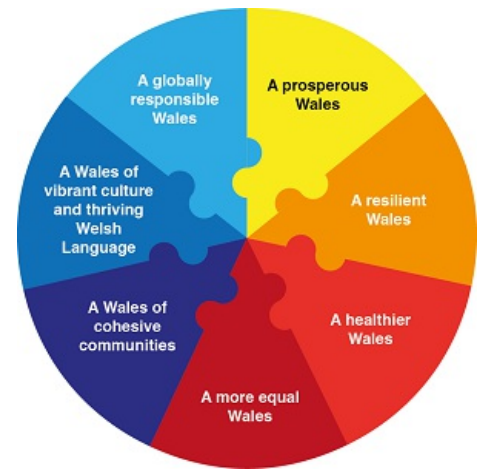
<b>Long term</b>	This proposal is focussed on providing an integrated, equitable and consistent quality of advice and support service across the region. Requirements for improved joint working across the service pathway and other services will be implemented via the contracted service. This may lead to increased co-location of services and may possibly lead to rationalisation of the buildings occupied by services, thereby reducing the need for office capacity.
<b>Prevention</b>	The proposal seeks to implement a new pathway of delivery for services accessed by those with memory concerns or issues and those diagnosed with dementia and their families / carers + create (where required) and invest in the provision of accessible services across the region that will ensure effective, efficient and equitable delivery across North Wales, reducing waiting times / diagnosis time frames and providing education and support at the pre assessment and post diagnosis stages.
<b>Integration</b>	A contractual accountability for developing integrated services and yearly review, and a review and development of, and investment in, the Memory Assessment Pathway, will ensure effective, efficient and equitable delivery across North Wales, reducing waiting times and providing education and support at the pre assessment and post diagnosis stages.
<b>Collaboration</b>	The project has the full support of the Regional Partnership Board and supports the implementation of the 'North Wales Dementia Strategy'. The Memory Assessment Pathway will be developed with partners and current service providers across the region in a collaborative approach. To ensure collaboration following awarding of the contract(s) the service specification & contract will reinforce, and be monitored on, the collaborative outcomes specified in the contract / service specification.
<b>Involvement</b>	There will be consultation with members of the public & stakeholders at all stages of the project. The aim of the project is to enable those with concerns over memory loss to access support that will support them and their families / carers through their diagnosis and continued journey with dementia. The project aims to implement a uniform approach to providing support and services across the region, whilst being mindful that local needs are understood fully and catered for through consultation.

## Summary of impact

### Well-being Goals

A prosperous Denbighshire	Positive
A resilient Denbighshire	Positive
A healthier Denbighshire	Positive
A more equal Denbighshire	Positive

A Denbighshire of cohesive communities	Positive
A Denbighshire of vibrant culture and thriving Welsh language	Positive
A globally responsible Denbighshire	Positive



## Main conclusions

The provision of a uniform and easily-accessible service across the region for those with concerns over memory loss, and those with a dementia diagnosis, will contribute greatly towards people being able to access the support that they need in a timescale and location that better suits their circumstances. A uniform approach to service delivery will provide the foundation for developing the services further over time to meet need. The current delivery of services across the region provides a firm foundation for the further development of good-practice and the sharing of expertise / experience.

## Evidence to support the Well-being Impact Assessment

- We have consulted published research or guides that inform us about the likely impact of the proposal
- We have involved an expert / consulted a group who represent those who may be affected by the proposal
- We have engaged with people who will be affected by the proposal

# THE LIKELY IMPACT ON DENBIGHSHIRE, WALES AND THE WORLD

## A prosperous Denbighshire

<b>Overall Impact</b>	Positive
<b>Justification for impact</b>	The project seeks to provide access to services close to home, thereby reducing the impact of carbon emissions on the environment by reducing the need to use vehicles to travel when accessing support services.
<b>Further actions required</b>	A Project Team has been established to oversee the ITT and implementation of the services post-ITT. The Project Team is made up of representatives from the six Local Authorities and the Betsi Cadwaladr University Health Board. The North Wales Leadership Group will provide governance and scrutiny of the project.

### Positive impacts identified:

<b>A low carbon society</b>	The project seeks to provide access to services close to home, thereby reducing the impact of carbon emissions on the environment by reducing the need to use vehicles to travel when accessing support services.
<b>Quality communications, infrastructure and transport</b>	-
<b>Economic development</b>	The project may develop employment / work placement opportunities within the county and regionally.
<b>Quality skills for the long term</b>	Developing the services will lead to increased understanding and knowledge of memory loss conditions.
<b>Quality jobs for the long term</b>	-
<b>Childcare</b>	-

### Negative impacts identified:

<b>A low carbon society</b>	-
<b>Quality communications, infrastructure and transport</b>	-
<b>Economic development</b>	-
<b>Quality skills for the long term</b>	-
<b>Quality jobs for the long term</b>	-
<b>Childcare</b>	-

## A resilient Denbighshire

<b>Overall Impact</b>	Positive
<b>Justification for impact</b>	The project seeks to provide access to equitable services close to home, thereby reducing the impact of carbon emissions on the environment by reducing the need to use vehicles to travel when accessing support services.

<b>Further actions required</b>	A Project Team has been established to oversee the ITT and implementation of the services post-ITT. The Project Team is made up of representatives from the six Local Authorities and the Betsi Cadwaladr University Health Board. The North Wales Leadership Group will provide governance and scrutiny of the project.
---------------------------------	--

**Positive impacts identified:**

<b>Biodiversity and the natural environment</b>	-
<b>Biodiversity in the built environment</b>	-
<b>Reducing waste, reusing and recycling</b>	-
<b>Reduced energy/fuel consumption</b>	The project seeks to provide access to equitable services close to home, thereby reducing the impact of carbon emissions on the environment by reducing the need to use vehicles to travel when accessing support services.
<b>People's awareness of the environment and biodiversity</b>	-
<b>Flood risk management</b>	-

**Negative impacts identified:**

<b>Biodiversity and the natural environment</b>	-
<b>Biodiversity in the built environment</b>	-
<b>Reducing waste, reusing and recycling</b>	-
<b>Reduced energy/fuel consumption</b>	-
<b>People's awareness of the environment and biodiversity</b>	-
<b>Flood risk management</b>	-

**A healthier Denbighshire**

<b>Overall Impact</b>	Positive
<b>Justification for impact</b>	<p>The whole purpose of the project is to enable those with memory issues and concerns and a diagnosis of dementia (and their family and carers) to have access to readily available support and advice.</p> <p>Being able to access information, assessment and support early (at the pre diagnosis stage and the post diagnosis stage) should contribute towards individuals being reassured that support is available when needed.</p> <p>Those that are identified as having memory issues, but that are not diagnosed with dementia, will be educated in the 5 ways to prevent the development of dementia.</p>

<b>Further actions required</b>	A Project Team has been established to oversee the ITT and implementation of the services post-ITT. The Project Team is made up of representatives from the six Local Authorities and the Betsi Cadwaladr University Health Board. The North Wales Leadership Group will provide governance and scrutiny of the project.
---------------------------------	--

#### **Positive impacts identified:**

<b>A social and physical environment that encourage and support health and well-being</b>	The project will develop social and peer support groups within the county and regionally through the 'Dementia Centre' model that will enable a one stop shop for memory concerns, issues and post diagnosis support.
<b>Access to good quality, healthy food</b>	Through the encouragement and promotion of those with memory loss concerns or a dementia diagnosis to follow a healthy diet.
<b>People's emotional and mental well-being</b>	Through the provision of a more coordinated and consistent advice and support service.
<b>Access to healthcare</b>	Through the provision of a more coordinated and consistent advice and support service.
<b>Participation in leisure opportunities</b>	Through the encouragement and promotion of those with memory loss concerns and a dementia diagnosis to access leisure activities.

#### **Negative impacts identified:**

<b>A social and physical environment that encourage and support health and well-being</b>	-
<b>Access to good quality, healthy food</b>	-
<b>People's emotional and mental well-being</b>	-
<b>Access to healthcare</b>	-
<b>Participation in leisure opportunities</b>	-

### **A more equal Denbighshire**

<b>Overall Impact</b>	Positive
<b>Justification for impact</b>	The needs and preferences of all members of the community will be considered through consultation. Services will be tailored locally to suit the needs and preferences of those that need to access the services.
<b>Further actions required</b>	A Project Team has been established to oversee the ITT and implementation of the services post-ITT. The Project Team is made up of representatives from the six Local Authorities and the Betsi Cadwaladr University Health Board. The North Wales Leadership Group will provide governance and scrutiny of the project.

#### **Positive impacts identified:**

<p><b>Improving the well-being of people with protected characteristics. The nine protected characteristics are: age; disability; gender reassignment; marriage or civil partnership; pregnancy and maternity; race; religion or belief; sex; and sexual orientation</b></p>	<p>The integrated pathway of advice and support service will be open to all members of the community to access. People with protected characteristics will be encouraged to access the services and access to the services will facilitate ease of access to all.</p>
<p><b>People who suffer discrimination or disadvantage</b></p>	<p>Access to the services will facilitate ease of access to all and be monitored via the 'All Wales Dementia Standard' framework for delivery.</p>
<p><b>People affected by socio-economic disadvantage and unequal outcomes</b></p>	<p>Access to the services will facilitate ease of access to all and be monitored via the 'All Wales Dementia Standard' framework for delivery.</p>
<p><b>Areas affected by socio-economic disadvantage</b></p>	<p>Access to the services will facilitate ease of access to all and be monitored via the 'All Wales Dementia Standard' framework for delivery.</p>

**Negative impacts identified:**

<p><b>Improving the well-being of people with protected characteristics. The nine protected characteristics are: age; disability; gender reassignment; marriage or civil partnership; pregnancy and maternity; race; religion or belief; sex; and sexual orientation</b></p>	<p>-</p>
<p><b>People who suffer discrimination or disadvantage</b></p>	<p>-</p>
<p><b>People affected by socio-economic disadvantage and unequal outcomes</b></p>	<p>-</p>
<p><b>Areas affected by socio-economic disadvantage</b></p>	<p>-</p>

<b>Overall Impact</b>	Positive
<b>Justification for impact</b>	The purpose of the project is to provide ease of access to a consistent level of high quality support across the whole region. The project will use Welsh Government funding to build on existing good-practice to deliver improved support to those with concerns over memory loss and a diagnosis of dementia across the region.
<b>Further actions required</b>	A Project Team has been established to oversee the ITT and implementation of the services post-ITT. The Project Team is made up of representatives from the six Local Authorities and the Betsi Cadwaladr University Health Board. The North Wales Leadership Group will provide governance and scrutiny of the project.

#### Positive impacts identified:

<b>Safe communities and individuals</b>	-
<b>Community participation and resilience</b>	Through local and regional consultation directed and overseen nationally by 'Improvement Cymru Wales' and the regional 'Dementia Steering Group'.
<b>The attractiveness of the area</b>	Through the provision of more readily accessible services.
<b>Connected communities</b>	Through the provision of a uniformed service across the region.
<b>Rural resilience</b>	Through the provision of accessible services located in communities across the region.

#### Negative impacts identified:

<b>Safe communities and individuals</b>	-
<b>Community participation and resilience</b>	-
<b>The attractiveness of the area</b>	-
<b>Connected communities</b>	
<b>Rural resilience</b>	

### A Denbighshire of vibrant culture and thriving Welsh language

<b>Overall Impact</b>	Positive
<b>Justification for impact</b>	The expectation is that a proportion of the staff employed in the services will be fluent in Welsh. Services will be accessible close to home. Ongoing consultation and engagement with local communities will ensure that culture and heritage are catered for in ongoing service delivery.
<b>Further actions required</b>	A Project Team has been established to oversee the ITT and implementation of the services post-ITT. The Project Team is made up of representatives from the six Local Authorities and the Betsi Cadwaladr University Health Board. The North Wales Leadership Group will provide governance and scrutiny of the project.

#### Positive impacts identified:

<b>People using Welsh</b>	Services will be easily accessible close to home. The expectation is that staff employed in the services will be fluent in Welsh.
---------------------------	---



<b>Promoting the Welsh language</b>	Services will be easily accessible close to home. The expectation is that staff employed in the services will be fluent in Welsh.
<b>Culture and heritage</b>	Services will be accessible close to home. Ongoing consultation and engagement with local communities will ensure that culture and heritage are catered for in ongoing service delivery.

#### **Negative impacts identified:**

<b>People using Welsh</b>	-
<b>Promoting the Welsh language</b>	-
<b>Culture and heritage</b>	

### **A globally responsible Denbighshire**

<b>Overall Impact</b>	Positive
<b>Justification for impact</b>	Services will be locally accessible. Staff working in the services may utilise local services such as shops / cafes to an increased rate, thereby supporting local community based shops, etc. Through the provision of locally-based / locally-accessible services there should be reduced need for people to use vehicular traffic to travel to / from the point of service.
<b>Further actions required</b>	A Project Team has been established to oversee the ITT and implementation of the services post-ITT. The Project Team is made up of representatives from the six Local Authorities and the Betsi Cadwaladr University Health Board. The North Wales Leadership Group will provide governance and scrutiny of the project.

#### **Positive impacts identified:**

<b>Local, national, international supply chains</b>	Through developing existing and new locally based and accessible services, the project should support this as staff will be working in local communities.
<b>Human rights</b>	Local communities will be able to access localised services.
<b>Broader service provision in the local area or the region</b>	Local communities will be able to access localised services.
<b>Reducing climate change</b>	Being able to access localised services will result in reduced travel.

#### **Negative impacts identified:**

<b>Local, national, international supply chains</b>	-
<b>Human rights</b>	-
<b>Broader service provision in the local area or the region</b>	-
<b>Reducing climate change</b>	-