

Welsh in Education Strategic Plan

Well-being Impact Assessment Report


This report summarises the likely impact of the proposal on the social, economic, environmental and cultural well-being of Denbighshire, Wales and the world.

Assessment Number:	951
Brief description:	The creation of a new 10 year Welsh in Education Strategic Plan for Denbighshire County Council.
Date Completed:	Version: 0
Completed by:	
Responsible Service:	Education & Children Services
Localities affected by the proposal:	Whole County,
Who will be affected by the proposal?	Current and Future Pupils of Denbighshire Schools, Parents, Staff and the wider community.
Was this impact assessment completed as a group?	No

IMPACT ASSESSMENT SUMMARY AND CONCLUSION

Before we look in detail at the contribution and impact of the proposal, it is important to consider how the proposal is applying the sustainable development principle. This means that we must act "in a manner which seeks to ensure that the needs of the present are met without compromising the ability of future generations to meet their own needs."

Score for the sustainability of the approach


 (3 out of 4 stars) Actual score : 29 / 36.

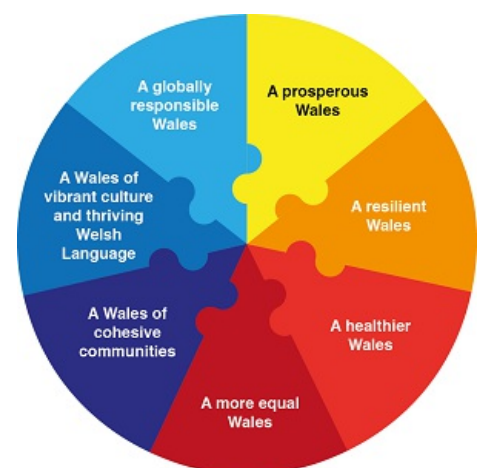
Summary for each Sustainable Development principle

Long term	The new strategic Plan will address how the Welsh language is delivered in all of our school over the next 10 years. It is an opportunity for Denbighshire to address long term sustainability, accessibility issues and increase Welsh medium provision in the County. The strategic plan has the potential to reduce the need for some pupils to travel to access Welsh medium education and will contribute to the target of a million speakers by 2050.
Prevention	The new plan has the potential to work with partners to deliver local based alternative approaches that are not reliant on public services.
Integration	This plan focuses on how the Welsh language is delivered in all of our schools and how the Council supports the schools, pupils and their families.
Collaboration	This plan will be delivered with established partners including Urdd and Mudiad Meithrin.
Involvement	The required consultation process for the Welsh in Education Strategic Plan is set out in the guidance produced by Welsh Government and will be followed. Further work will take place with stakeholders when individual proposals are developed.

Summary of impact

Well-being Goals

A prosperous Denbighshire	Positive
A resilient Denbighshire	Neutral
A healthier Denbighshire	Neutral
A more equal Denbighshire	Positive
A Denbighshire of cohesive communities	Positive
A Denbighshire of vibrant culture and thriving Welsh language	Positive
A globally responsible Denbighshire	Neutral



Main conclusions

The new Welsh in Education Strategic Plan has the potential to have a positive impact on A Denbighshire of vibrant culture and thriving Welsh language, cohesive communities, a more equal Denbighshire and a more prosperous Denbighshire.

Evidence to support the Well-being Impact Assessment

- We have consulted published research or guides that inform us about the likely impact of the proposal
- We have involved an expert / consulted a group who represent those who may affected by the proposal
- We have engaged with people who will be affected by the proposal

THE LIKELY IMPACT ON DENBIGHSHIRE, WALES AND THE WORLD

A prosperous Denbighshire

Overall Impact	Positive
Justification for impact	The plan has a potential to deliver improvement in infrastructure, skills and the availability of provision.
Further actions required	Not applicable.

Positive impacts identified:

A low carbon society	Could reduce the need to travel to nearest Welsh medium school.
Quality communications, infrastructure and transport	Could deliver improvement in school and pre school facilities
Economic development	Not applicable
Quality skills for the long term	Improving skills of staff
Quality jobs for the long term	Create new jobs and
Childcare	Increase the availability of Welsh medium and bilingual childcare

Negative impacts identified:

A low carbon society	
Quality communications, infrastructure and transport	
Economic development	Not applicable
Quality skills for the long term	
Quality jobs for the long term	
Childcare	

A resilient Denbighshire

Overall Impact	Neutral
Justification for impact	The impact is neutral overall as the new plan doesn't directly address any of the statements.
Further actions required	Not applicable

Positive impacts identified:

Biodiversity and the natural environment	Not applicable
---	----------------

Biodiversity in the built environment	Not applicable
Reducing waste, reusing and recycling	Not applicable
Reduced energy/fuel consumption	Not applicable
People's awareness of the environment and biodiversity	Not applicable
Flood risk management	Not applicable

Negative impacts identified:

Biodiversity and the natural environment	Not applicable
Biodiversity in the built environment	Not applicable
Reducing waste, reusing and recycling	Not applicable
Reduced energy/fuel consumption	Not applicable
People's awareness of the environment and biodiversity	Not applicable
Flood risk management	Not applicable

A healthier Denbighshire

Overall Impact	Neutral
Justification for impact	Overall the impact is currently neutral as the potential impacts are possibilities due to the plan not yet being approved.
Further actions required	Not applicable

Positive impacts identified:

A social and physical environment that encourage and support health and well-being	Not applicable
Access to good quality, healthy food	Not applicable
People's emotional and mental well-being	A consequence of the plan could enable more people to participate in activities.
Access to healthcare	Not applicable
Participation in leisure opportunities	Additional leisure opportunities may be created by partners

Negative impacts identified:

A social and physical environment that encourage and support health and well-being	Not applicable
Access to good quality, healthy food	Not applicable
People's emotional and mental well-being	Not applicable
Access to healthcare	Not applicable
Participation in leisure opportunities	Not applicable

A more equal Denbighshire

Overall Impact	Positive
Justification for impact	The new plan will improve access to Welsh medium education and also improve the standard of Welsh in all schools.
Further actions required	Not applicable,

Positive impacts identified:

Improving the well-being of people with protected characteristics. The nine protected characteristics are: age; disability; gender reassignment; marriage or civil partnership; pregnancy and maternity; race; religion or belief; sex; and sexual orientation	The new plan will improve access to Welsh medium education and also improve the standard of Welsh in all schools.
People who suffer discrimination or disadvantage	The new plan will improve access to Welsh medium education and also improve the standard of Welsh in all schools.
People affected by socio-economic disadvantage and unequal outcomes	The new plan will improve access to Welsh medium education and also improve the standard of Welsh in all schools.
Areas affected by socio-economic disadvantage	The new plan will improve access to Welsh medium education and also improve the standard of Welsh in all schools.

Negative impacts identified:

Improving the well-being of people with protected characteristics. The nine protected characteristics are: age; disability; gender reassignment; marriage or civil partnership; pregnancy and maternity; race; religion or belief; sex; and sexual orientation	Not applicable
People who suffer discrimination or disadvantage	Not applicable
People affected by socio-economic disadvantage and unequal outcomes	Not applicable
Areas affected by socio-economic disadvantage	Not applicable

A Denbighshire of cohesive communities

Overall Impact	Positive
Justification for impact	The new plan has the potential to strengthen community cohesion through improving participation and resilience in both town and rural communities.
Further actions required	Not applicable.

Positive impacts identified:

Safe communities and individuals	Not applicable
Community participation and resilience	Could help community participation and strengthen resilience.
The attractiveness of the area	Not applicable
Connected communities	Improve access to Welsh medium education and pre school
Rural resilience	The same policy will be delivered in rural areas as the rest of the County ensuring parity of provision.

Negative impacts identified:

Safe communities and individuals	Not applicable
Community participation and resilience	Not applicable

The attractiveness of the area	Not applicable
Connected communities	Not applicable
Rural resilience	Not applicable

A Denbighshire of vibrant culture and thriving Welsh language

Overall Impact	Positive
Justification for impact	The key impact from this strategic plan will its positive impact on the Welsh language.
Further actions required	Not applicable

Positive impacts identified:

People using Welsh	Will plan for improving activities using Welsh.
Promoting the Welsh language	Will provide a blueprint to maximise opportunities for using Welsh
Culture and heritage	Will assist to support the delivery of Welsh culture and heritage.

Negative impacts identified:

People using Welsh	Not applicable
Promoting the Welsh language	Not applicable
Culture and heritage	Not applicable

A globally responsible Denbighshire

Overall Impact	Neutral
Justification for impact	There is no specific impact on these statements.
Further actions required	Not applicable

Positive impacts identified:

Local, national, international supply chains	Not applicable
Human rights	Not applicable
Broader service provision in the local area or the region	Not applicable
Reducing climate change	Not applicable

Negative impacts identified:

Local, national, international supply chains	Not applicable
Human rights	Not applicable

Broader service provision in the local area or the region	Not applicable
Reducing climate change	Not applicable