

# Traffic Block Capital Bid 2020-21

## Well-being Impact Assessment Report


This report summarises the likely impact of the proposal on the social, economic, environmental and cultural well-being of Denbighshire, Wales and the world.

Assessment Number:	752
Brief description:	The Traffic Block Capital Bid contains a number of smaller scale projects including road safety, active travel, tourist signing and town centre traffic, parking and public realm improvements.
Date Completed:	11/12/2019 19:38:57 Version: 1
Completed by:	Mike Jones
Responsible Service:	Planning & Public Protection
Localities affected by the proposal:	Whole County,
Who will be affected by the proposal?	Residents, Businesses, all road users, bus operators
Was this impact assessment completed as a group?	No

# IMPACT ASSESSMENT SUMMARY AND CONCLUSION

Before we look in detail at the contribution and impact of the proposal, it is important to consider how the proposal is applying the sustainable development principle. This means that we must act "in a manner which seeks to ensure that the needs of the present are met without compromising the ability of future generations to meet their own needs."

## Score for the sustainability of the approach

 ( 2 out of 4 stars ) Actual score : 17 / 30.

## Implications of the score

The individual proposals will be developed to maximise the serviceable life of the asset (i.e. sign, road/cycle path etc).

Some of the projects are active travel routes so will help to provide alternative transport choice to the private car

## Summary of impact

Well-being Goals

A prosperous Denbighshire

A resilient Denbighshire

A healthier Denbighshire

A more equal Denbighshire

A Denbighshire of cohesive communities

A Denbighshire of vibrant culture and thriving Welsh language

A globally responsible Denbighshire

Positive

Positive

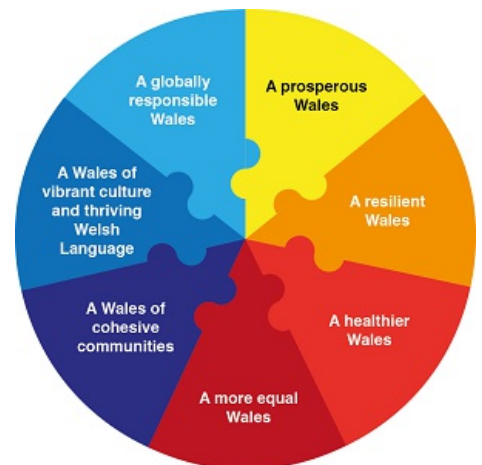
Positive

Positive

Positive

Positive

Positive



## Main conclusions

There are many positives from the schemes included in the bid. This includes schemes with health benefits (active travel schemes), schemes with safety benefits (road safety), economic benefits (brown signs and Rhyl and Llangollen town centre schemes), plus schemes that promote local culture heritage (Vale of Clwyd signing scheme).

## Evidence to support the Well-being Impact Assessment

- We have consulted published research or guides that inform us about the likely impact of the proposal
- We have involved an expert / consulted a group who represent those who may be affected by the proposal
- We have engaged with people who will be affected by the proposal

# THE LIKELY IMPACT ON DENBIGHSHIRE, WALES AND THE WORLD

## A prosperous Denbighshire

<b>Overall Impact</b>	Positive
<b>Justification for impact</b>	The benefits for transport infrastructure, potential for carbon reduction and benefits for the local retail and tourist economies.
<b>Further actions required</b>	Ensure opportunities to maximise the whole life costs of assets are taken into account.

### Positive impacts identified:

<b>A low carbon society</b>	Active travel projects are intended to offer an alternative to the car
<b>Quality communications, infrastructure and transport</b>	They are all transport projects aimed at improving the quality of the transport network
<b>Economic development</b>	The Rhyl Town Centre and Llangollen projects are intended to boost the local town centre economies. The two brown signing projects will benefit the tourism economy.
<b>Quality skills for the long term</b>	N/A
<b>Quality jobs for the long term</b>	N/A
<b>Childcare</b>	N/A

### Negative impacts identified:

<b>A low carbon society</b>	
<b>Quality communications, infrastructure and transport</b>	
<b>Economic development</b>	
<b>Quality skills for the long term</b>	
<b>Quality jobs for the long term</b>	
<b>Childcare</b>	

## A resilient Denbighshire

<b>Overall Impact</b>	Positive
<b>Justification for impact</b>	Active travel projects offer the opportunity for reducing car journeys

<b>Further actions required</b>	Good design and promotion of projects
---------------------------------	---------------------------------------

**Positive impacts identified:**

<b>Biodiversity and the natural environment</b>	N/A
<b>Biodiversity in the built environment</b>	N/A
<b>Reducing waste, reusing and recycling</b>	N/A
<b>Reduced energy/fuel consumption</b>	Active travel projects offer opportunities for reduced journeys by motor vehicle
<b>People's awareness of the environment and biodiversity</b>	N/A
<b>Flood risk management</b>	N/A

**Negative impacts identified:**

<b>Biodiversity and the natural environment</b>	
<b>Biodiversity in the built environment</b>	
<b>Reducing waste, reusing and recycling</b>	
<b>Reduced energy/fuel consumption</b>	
<b>People's awareness of the environment and biodiversity</b>	
<b>Flood risk management</b>	

## A healthier Denbighshire

<b>Overall Impact</b>	Positive
<b>Justification for impact</b>	Physical and mental health and well-being benefits of active travel routes, and public realm town centre improvements. More awareness of tourist attractions signed by the two brown sign projects
<b>Further actions required</b>	Ensure good design of active travel routes, and sympathetic design of public realm improvements.

**Positive impacts identified:**

<b>A social and physical environment that encourage and support health and well-being</b>	Active travel projects encourage a more active lifestyle. The Rhyl Town Centre, and Llangollen 2020 projects are intended to better manage traffic and parking, whilst also improving the physical environment
<b>Access to good quality, healthy food</b>	N/A
<b>People's emotional and mental well-being</b>	More active lifestyle, reduced traffic congestion and improvements to public realm can all have a positive impact for people's emotional and mental well-being.
<b>Access to healthcare</b>	N/A
<b>Participation in leisure opportunities</b>	Although primarily aimed at providing an alternative travel mode for commuting, active travel routes do, of course, also provide a route for leisure cycling. The brown sign schemes will help raise awareness of the various tourist attractions they promote.

### Negative impacts identified:

<b>A social and physical environment that encourage and support health and well-being</b>	
<b>Access to good quality, healthy food</b>	
<b>People's emotional and mental well-being</b>	
<b>Access to healthcare</b>	
<b>Participation in leisure opportunities</b>	

## A more equal Denbighshire

<b>Overall Impact</b>	Positive
<b>Justification for impact</b>	Projects which improve active travel choices can benefit areas with lower than average car-ownership. Benefits to local retail and tourist economy may produce more job opportunities and improve the viability of some existing jobs.
<b>Further actions required</b>	Ensure good community engagement and quality design - making reference to WG active travel guidance.

### Positive impacts identified:

<b>Improving the well-being of people with protected characteristics. The nine protected characteristics are: age; disability; gender reassignment; marriage or civil partnership; pregnancy and maternity; race; religion or belief; sex; and sexual orientation</b>	N/A
<b>People who suffer discrimination or disadvantage</b>	N/A
<b>Areas with poor economic, health or educational outcomes</b>	Improvements to active travel routes can especially benefit areas where car ownership is lower than the UK average, such as West Rhyl. Economic benefits of town centre projects plus brown signing schemes.
<b>People in poverty</b>	See above box.

### Negative impacts identified:

<b>Improving the well-being of people with protected characteristics. The nine protected characteristics are: age; disability; gender reassignment; marriage or civil partnership; pregnancy and maternity; race; religion or belief; sex; and sexual orientation</b>	
<b>People who suffer discrimination or disadvantage</b>	
<b>Areas with poor economic, health or educational outcomes</b>	
<b>People in poverty</b>	

## A Denbighshire of cohesive communities

<b>Overall Impact</b>	Positive
-----------------------	----------

<b>Justification for impact</b>	Road safety benefits. Strong community involvement already for some of the projects. Public realm improvements. More travel choice.
<b>Further actions required</b>	Continue to ensure good community engagement takes place.

**Positive impacts identified:**

<b>Safe communities and individuals</b>	Road safety projects will improve safety in locations where statistics have identified that there are higher than normal numbers of collisions occurring involving casualties
<b>Community participation and resilience</b>	Llangollen 2020 is a community-led project. Strong engagement with Rhyl Town Centre project so far - including development of a second traffic system option based on feedback received from first consultation.
<b>The attractiveness of the area</b>	Public realm improvements to Rhyl Town Centre and Llangollen Castle Street (and side roads).
<b>Connected communities</b>	Active travel routes will provide more travel choices.
<b>Rural resilience</b>	N/A

**Negative impacts identified:**

<b>Safe communities and individuals</b>	
<b>Community participation and resilience</b>	
<b>The attractiveness of the area</b>	
<b>Connected communities</b>	
<b>Rural resilience</b>	

**A Denbighshire of vibrant culture and thriving Welsh language**

<b>Overall Impact</b>	Positive
<b>Justification for impact</b>	Brown signs will be Welsh above English. Vale of Clwyd brown signs will sign Denbigh and Rhuddlan castles plus St Asaph cathedral.
<b>Further actions required</b>	No scope to further enhance the signage.

**Positive impacts identified:**

<b>People using Welsh</b>	N/A
<b>Promoting the Welsh language</b>	Brown signs will be bilingual Welsh above English
<b>Culture and heritage</b>	Vale of Clwyd brown sign scheme will sign Rhuddlan Castle, Denbigh Castle and St Asaph Cathedral. It will also include the title of Vale of Clwyd and will therefore raise awareness of the Vale.

**Negative impacts identified:**

<b>People using Welsh</b>	
<b>Promoting the Welsh language</b>	
<b>Culture and heritage</b>	

**A globally responsible Denbighshire**

<b>Overall Impact</b>	Positive
<b>Justification for impact</b>	Use of local contractors is quite prevalent for smaller construction projects such as the ones listed in this bid.
<b>Further actions required</b>	Consider local suppliers for construction materials, wherever possible.

**Positive impacts identified:**

<b>Local, national, international supply chains</b>	Local contractors and sub-contractors will be used wherever possible.
<b>Human rights</b>	N/A
<b>Broader service provision in the local area or the region</b>	N/A

**Negative impacts identified:**

<b>Local, national, international supply chains</b>	
<b>Human rights</b>	
<b>Broader service provision in the local area or the region</b>	