

# Rhyl Waterpark and Leisure Attraction

## Wellbeing Impact Assessment Report

This report summarises the likely impact of a proposal on the social, economic, environmental and cultural well-being of Denbighshire, Wales and the world.

Assessment Number:	165
Brief description:	The development of a new leisure attraction on the Rhyl waterfront.
Date Completed:	19/01/2017 16:32:40 Version: 1
Completed By:	Russell Vaughan
Responsible Service:	Facilities, Assets & Housing
Localities affected by the proposal:	Rhyl,

# IMPACT ASSESSMENT SUMMARY AND CONCLUSION

Before we look in detail at the contribution and impact of the proposal, it is important to consider how the proposal is applying the sustainable development principle. This means that we must act "in a manner which seeks to ensure that the needs of the present are met without compromising the ability of future generations to meet their own needs."

## Score for the sustainability of the approach

Could some small changes in your thinking produce a better result?

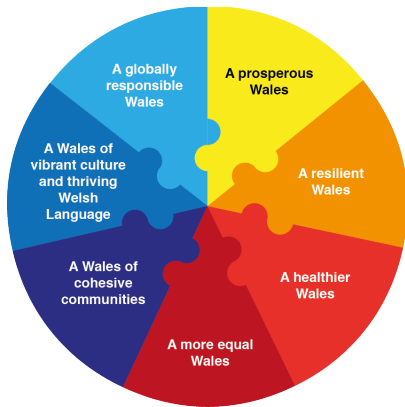
(3 out of 4 stars)



Actual score: 21/ 24.

## Summary of impact

Wellbeing Goals



A prosperous Denbighshire	Positive
A resilient Denbighshire	Positive
A healthier Denbighshire	Positive
A more equal Denbighshire	Positive
A Denbighshire of cohesive communities	Positive
A Denbighshire of vibrant culture and thriving Welsh language	Positive
A globally responsible Denbighshire	Positive

## Main conclusions

A positive assessment. The new facility could deliver significant economic benefits to both the local and regional economy. The additional leisure facilities will create capacity and encourage greater participation amongst residents and visitors. The development will act as a catalyst for further regeneration and create a sense of pride in Rhyl and Denbighshire.

# THE LIKELY IMPACT ON DENBIGHSHIRE, WALES AND THE WORLD

## A prosperous Denbighshire

Overall Impact:	Positive
Justification for Impact:	Jobs created during construction and after opening. New facility should be a catalyst for further regeneration on Rhyl coastal front.

### **Positive consequences identified:**

New energy efficient building to replace an inefficient, ageing facility.

Create new jobs at the facility, during construction and in the wider town. Catalyst for further regeneration in Rhyl.

A number of new jobs created at varying levels, both full time and seasonal. Working closely with DWP to ensure the local community are geared up for the jobs that will be created.

Qualifications linked to jobs on offer.

Improvements to existing car parking arrangements. The facility is located close to all public transport links.

### **Unintended negative consequences identified:**

### **Mitigating actions:**

## A resilient Denbighshire

Overall Impact:	Positive
Justification for Impact:	New energy efficient building and plant to minimise energy consumption.

### **Positive consequences identified:**

New facility on existing promenade.

Encourage recycling within new facility

New building with latest energy efficiency measures and new plant

Sea defences currently in place and the facility has been raised to minimise the risk.

### **Unintended negative consequences identified:**

Additional waste from increased footfall

### **Mitigating actions:**

## A healthier Denbighshire

Overall Impact:	Positive
Justification for Impact:	As this is an additional leisure facility for the town it will encourage greater participation and capacity.

### **Positive consequences identified:**

New aquatic and climbing facilities to support healthy lifestyles

A range of healthy and fast food & drink will be available.

New aquatic and climbing facilities to support healthy lifestyles and encourages use from groups from all backgrounds.

Benefits of exercise

### **Unintended negative consequences identified:**

A range of healthy and fast food & drink will be available.

### **Mitigating actions:**

## A more equal Denbighshire

Overall Impact:	Positive
Justification for Impact:	Additional capacity and fully inclusive facility

### **Positive consequences identified:**

The facility will be fully inclusive  
Creates capacity and encourages use for residents and visitors.

### **Unintended negative consequences identified:**

### **Mitigating actions:**

## A Denbighshire of cohesive communities

Overall Impact:	Positive
Justification for Impact:	Regeneration of the Rhyl coast will create a sense of pride in the community and additional facilities will encourage participation for all age groups.

### **Positive consequences identified:**

As there is an increase in the adventure activities on offer to the town, it will encourage youth participation. Will encourage community use through the Denbighshire Leisure card and schools.  
A new, well designed facility will create a sense of pride in the area.

### **Unintended negative consequences identified:**

The facility will be built on an existing skate park which will be relocated and upgraded with the involvement of the community.  
Some people may feel a new facility will be a barrier between the town and the beach/sea.

### **Mitigating actions:**

## A Denbighshire of vibrant culture and thriving Welsh language

Overall Impact:	Positive
Justification for Impact:	Investment in Rhyl will portray the town and County in a positive light

### **Positive consequences identified:**

Will be desirable that all customer facing staff will be bilingual  
All signage will comply with Welsh Language Standards  
Investment in Rhyl will portray the town and County in a positive light

### **Unintended negative consequences identified:**

### **Mitigating actions:**



## A globally responsible Denbighshire

Overall Impact:	Positive
Justification for Impact:	Will provide new employment and be a catalyst for further regeneration.

### **Positive consequences identified:**

Principal contractor will encourage use of local supply chain.  
A catalyst for regeneration with complimentary businesses being established.

### **Unintended negative consequences identified:**

### **Mitigating actions:**